

40' GN Specification

1. Model: CTSV/2AS4004IUS

This chassis is designed for transporting a 40' ISO container

This chassis meets all DOT, AAR, ANSI, TOFC, FMVSS, SAE and TTMA specifications.

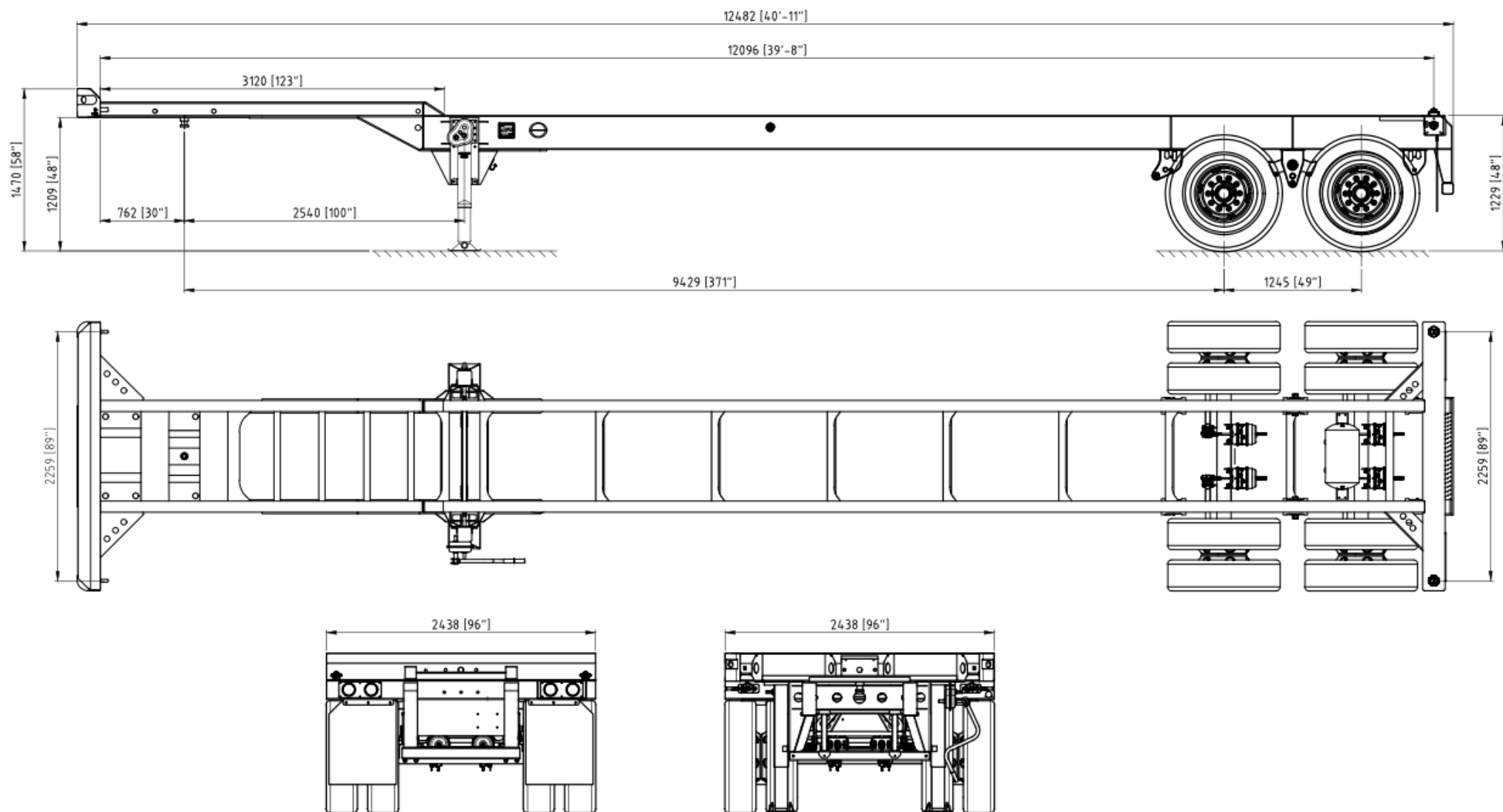
2. General

Overall Length:	40'-8" (Excluding dock bumpers)
Overall Width:	96"
Overall Height:	58"
Fifth Wheel Height:	48 ± 1"
Rear Deck Height:	48 ± 1"
Kingpin Location:	30" (From the rear face of the front bolster)
Landing Gear Location:	100" (From the kingpin center)
Axle Spread:	49"
Tare Weight:	6,600 lbs ± 2%
Payload:	67,200 lbs (30,480kgs)

3. Steel Structure & Components

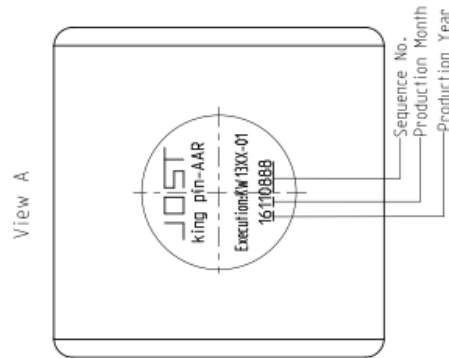
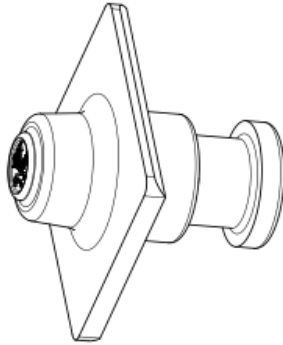
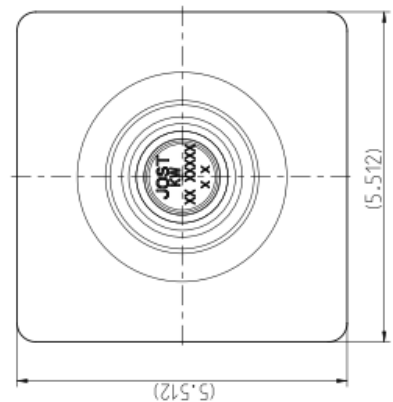
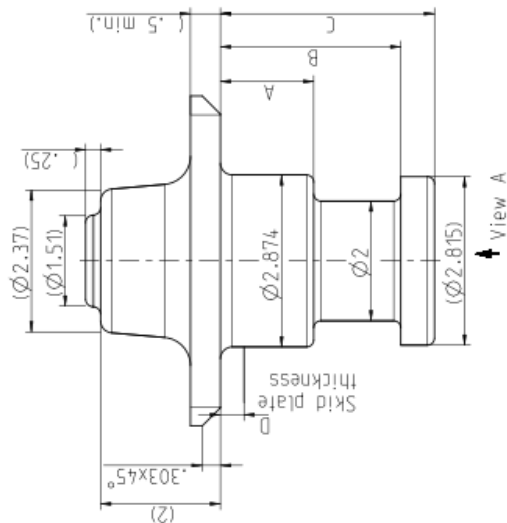
Main beam:	W12@19lb/ft hot-rolled H-beam, ASTM A572 Grade 50 or equivalent
Cross member:	3/16" thick x 3" wide x 9" deep channel with profiled bar type diagonal brace.
GN member:	5" deep x 4" wide fabricated H-beam, 1/2" thick flanges and 1/4" thick web.
Upper Coupler:	1/4" pick up plate with JOST 2" diameter square type king pin per SAE standard.
Front Bolster:	8" wide x 10" high x 1/4" thick open section, with 3-1/2" chamfer in full length for gathering container in operation. 7-way receptacle and glad hands are in the center of front bolster. Casted corner caps (TOCA 905-940-000RS/CS).
Rear Bolster:	8" wide x 3/8" thick top plate with 7" wide x 6-5/8" deep x 1/4" thick "U" type bottom channel.
Rear Bumper:	4" x 4" square tube step with taper "H" section vertical member. Bar is welded to uprights and main beam.
License plate bracket	Extending from rear bolster within envelope of ICC bumper. Plate is to contain rear cluster lights, rear fleet number & license plate.
Front Locking pin:	TOCA 905-910-000-LH/RH
Rear twist Lock:	TOCA 905-123-000-90-LH/RH
Landing Gear:	JOST A440 Magnum with solid axle shoes; 62,500lbs capacity, 2-speed 17" travel with Low profile sand shoes. Crank handle is located on the driver's side of the chassis. (10-year warranty). Pre-painted BLUE RAL5010 color.
Suspension:	AXN mechanical tandem suspension, overslung configuration with high-arch 3-leaf spring (354-00)
Axles:	AXN 5" round axles with 22500lb capacity; 71.5" track, Q+ 16.5"X7" 4707Q brake. (BLUE RAL5010 color) 28 spline, HALDEX 5.5" automatic slack adjusters. Reserved PSI interface; Heat Sensing Labels. Axle Installation orientation: 270 degrees FRONT, chambers UP (1 abs ready front, 1 non abs rear per unit).
Wheel end:	AXN Hub & Drum Assembly P/N H30-0647BFNTZ/H30-0647BFNZ, STEMCO 358-4009 Integrated Sentinel Grease Hub Cap, STEMCO seals and bearings. Spindle nut: STEMCO Zip-Torq P/N 400-4743. (5-year warranty wheelend).
Lubricant:	CITGO SynDurance 460 NLGI 00 grease lubricant.
Wheels:	JINGU 22.5 x 8.25 10-stud hub-piloted wheels with 5 hand holes and with TR572 valve stem. Pre-painted white color.
Tires:	WESTLAKE 11R22.5-14PR tubeless type SEALCO 110800 spring brake priority valve system and WABCO 2S/1M ABS system
Brake System:	PHILLIPS glad hand 12-0061 and 12-0081, 3/8" blue air tube for control and 3/8" red for supply. HALDEX Goldseal T30/30, 2.5" stroke brake chamber. FUWA air tanks. PHILLIPS mold seal wiring harness, Reserved PSI and GPS connector. (10-year warranty). OPTRONICS LED lights (amp connections for S/T/T lights and .180 bullets for others). The theft proof design used for 4" LED lighting.
Electrical:	Meets or exceeds DOT and SAE standards. PHILLIPS 16-724 aluminum alloy material
Electrical Receptacle	PHILLIPS 16-802. Installed on roadside near crank handle.
Document Holder:	"3M" brand. Installed per federal regulations
Conspicuity tape:	Abrasive blast of all metal surfaces – not less than SA-2.5 to achieve clean bare steel.
Painting:	Surface will be coated with electrophoresis primer and true acrylic aliphatic urethane topcoat. Color BLUE RAL5010 , Total thickness not less than 80µm after dry membrane. Coating supplier: NOROO (7-year warranty) Customer configuration (includes Decal, layout, VIN, nameplate)
Marking:	NONE
Hubodometer:	NONE
Tire Inflation system:	NONE
Mud flaps:	

4. Layout



KW-1306

Article-no.	A(in.) Dimension A	B(in.) Dimension B	C(in.) Dimension C	D(in.) Skid plate Thickness	Weight(kg) ±10%
KW1306	1.558	3.012	3.574	.25	5.13
KW1308	1.62	3.074	3.636	.31	5.18
KW1310	1.683	3.137	3.699	.38	5.23

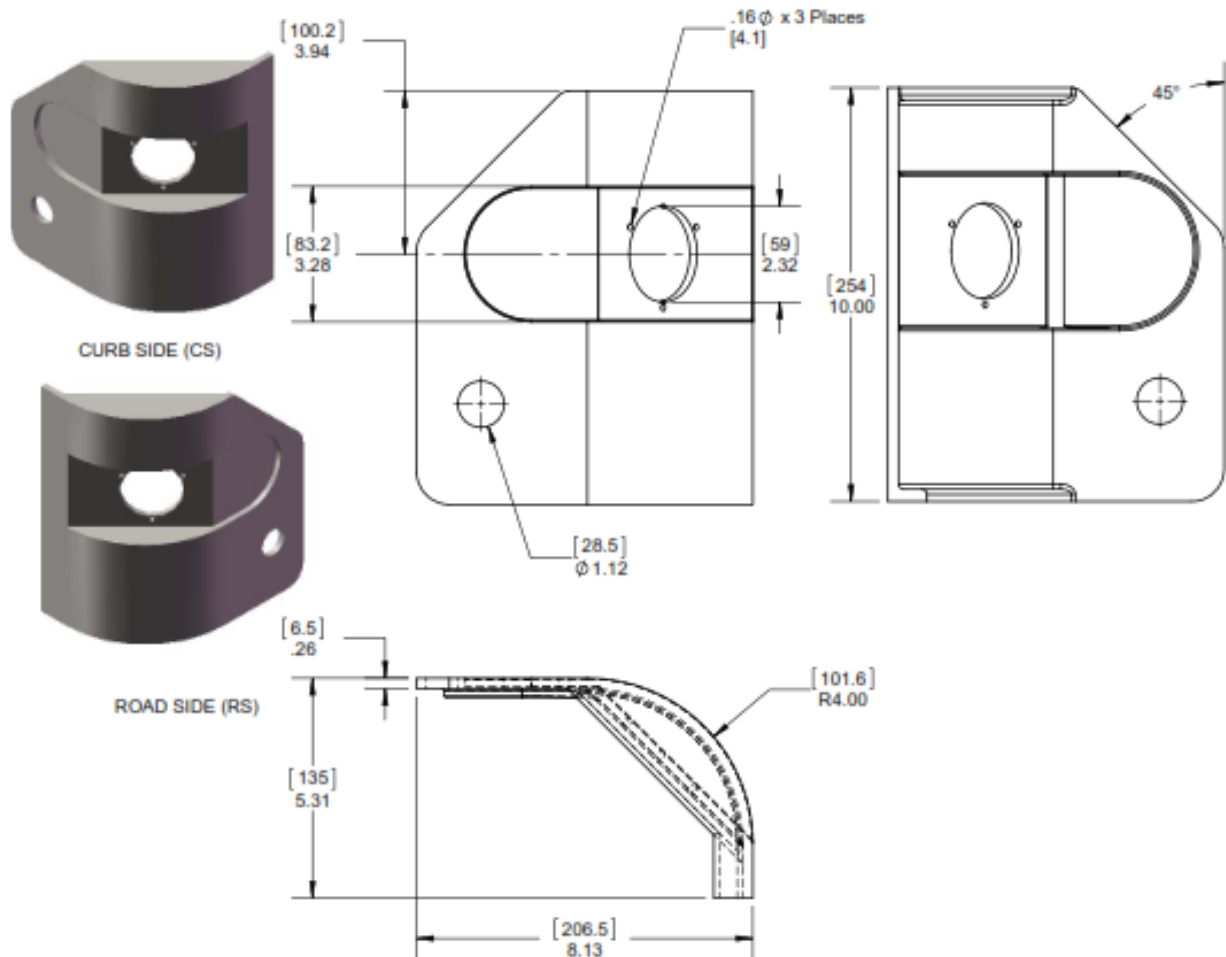
[illegible]

FRONT BOLSTER END CAPS

TOCA # 905-940-000RS/CS



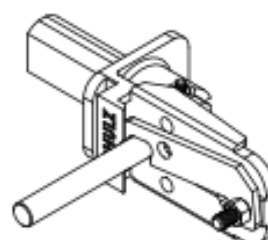
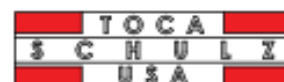
Front Bolster End Casting



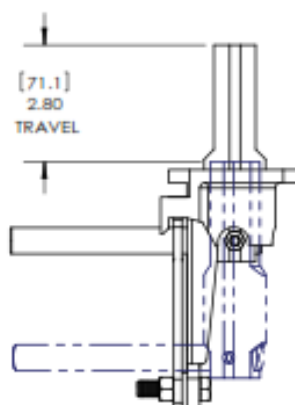
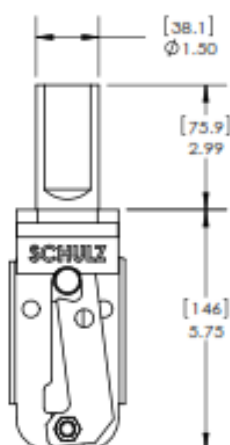
CURB SIDE (CS) SHOWN
ROAD SIDE (RS) OPPOSITE

Part Number: 905-940-000CS
Part Number: 905-940-000RS

FRONT LOCKING PINS
TOCA #905-910-000-LH/RH



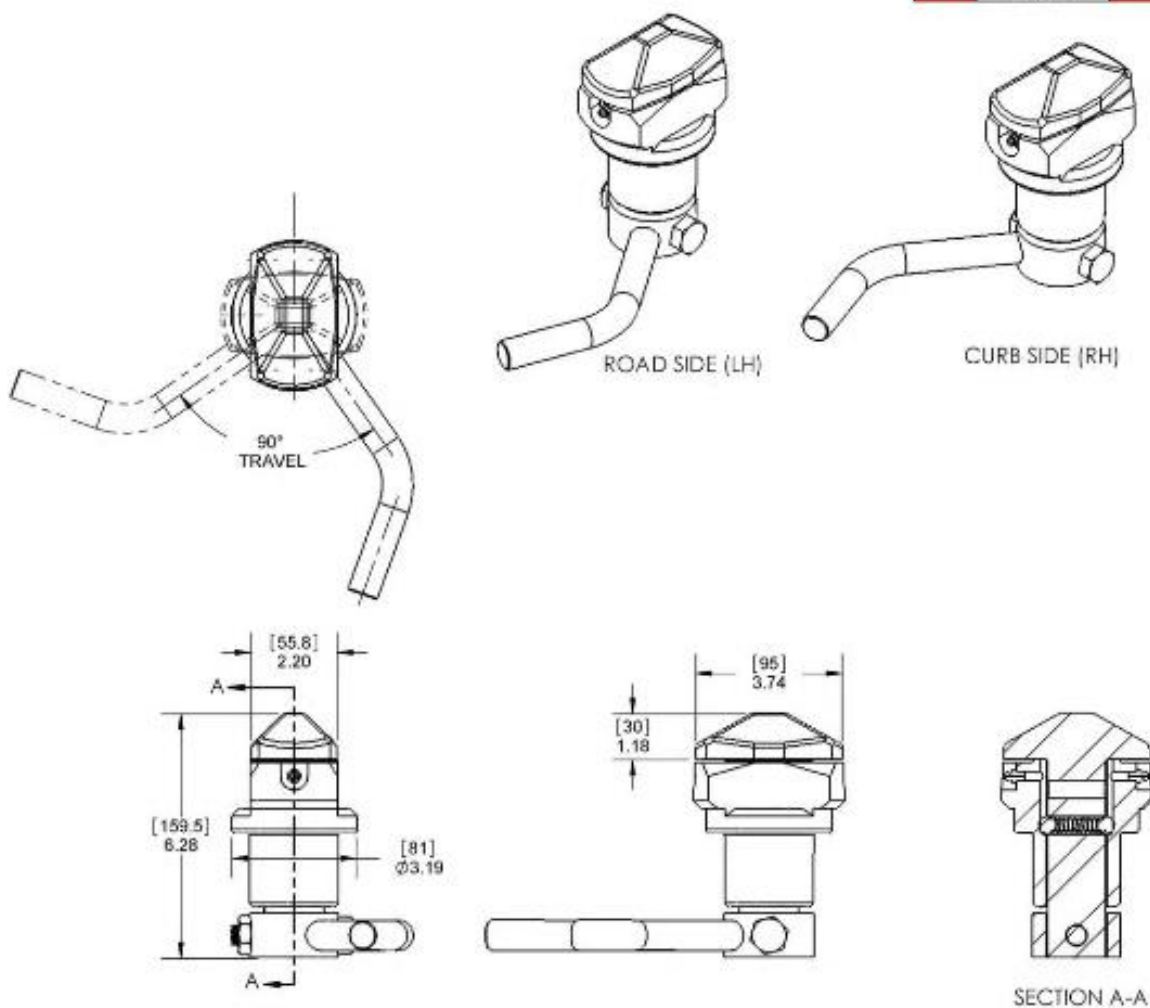
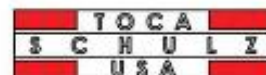
ROAD SIDE -LH- SHOWN
ROTATE LOCK 180° FOR
CURB SIDE -RH- PIN LOCK



Part Number: 905-910-000-LH
FB99HL-A-LH
905-910-000-RH
FB99HL-A-RH

TWISTLOCKS

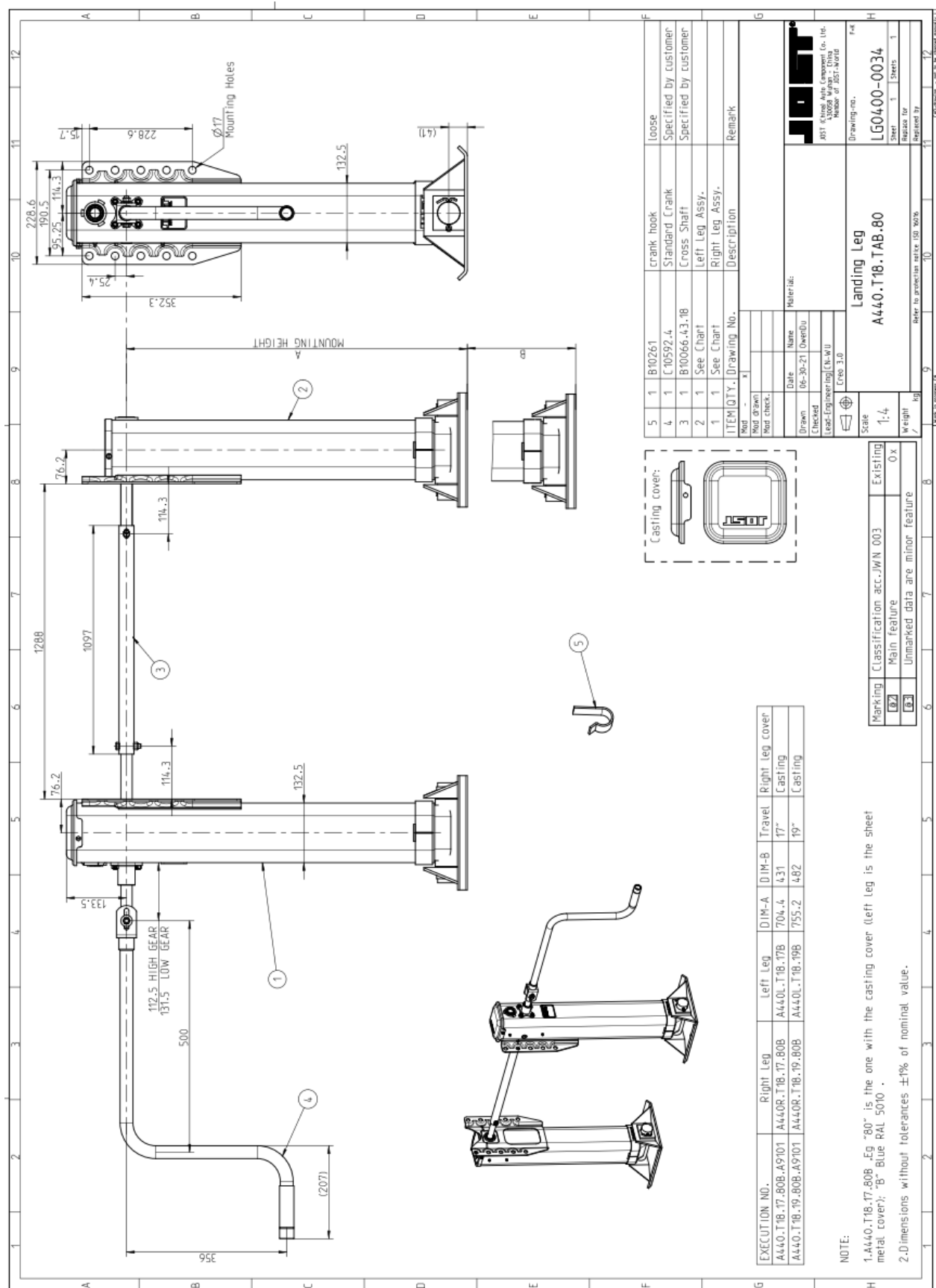
TOCA # 905-123-000-90-LH/RH



Part Number: 905-123-000-90-LH

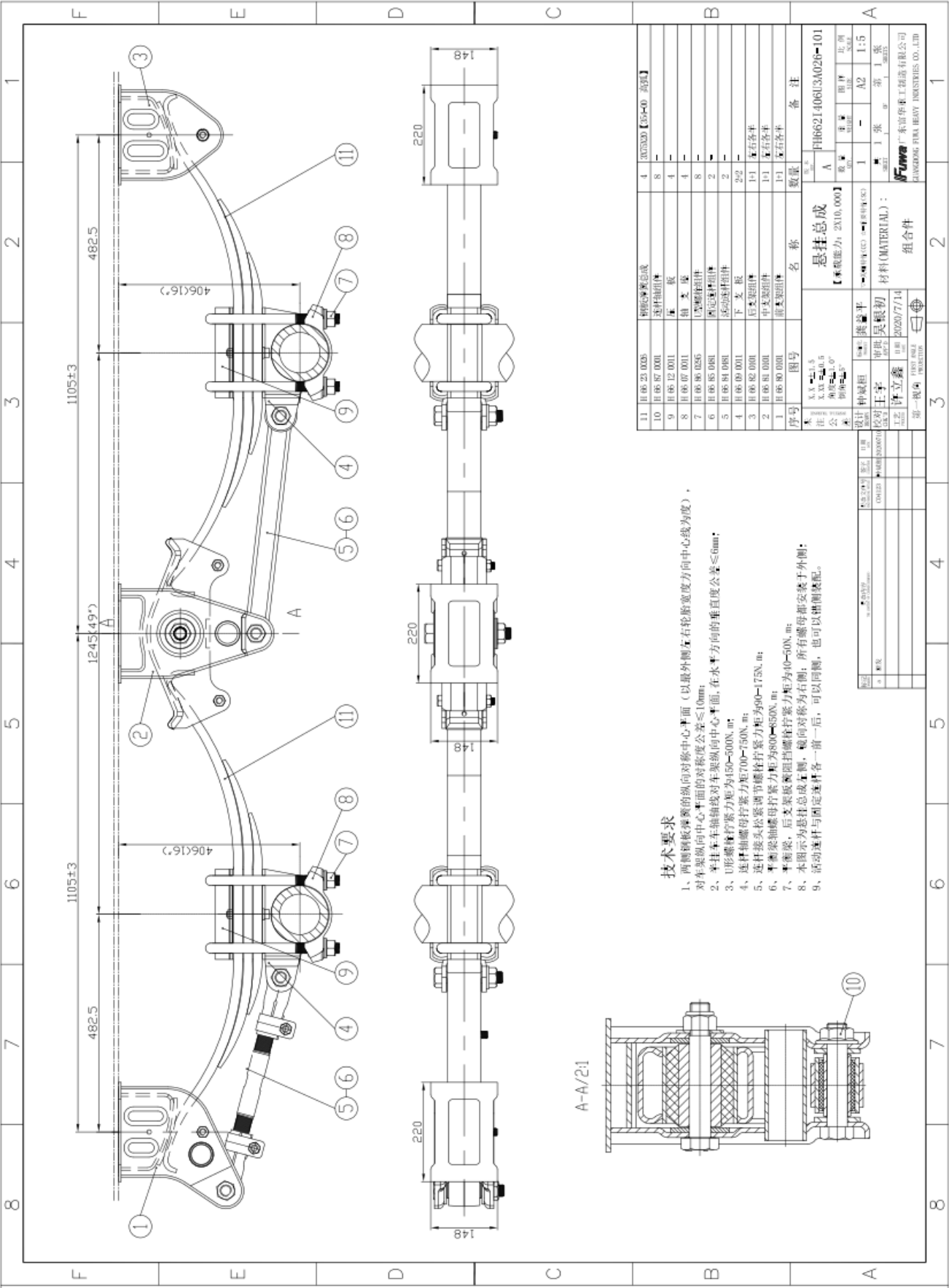
905-123-000-90-RH

JOST # A440.T18.17



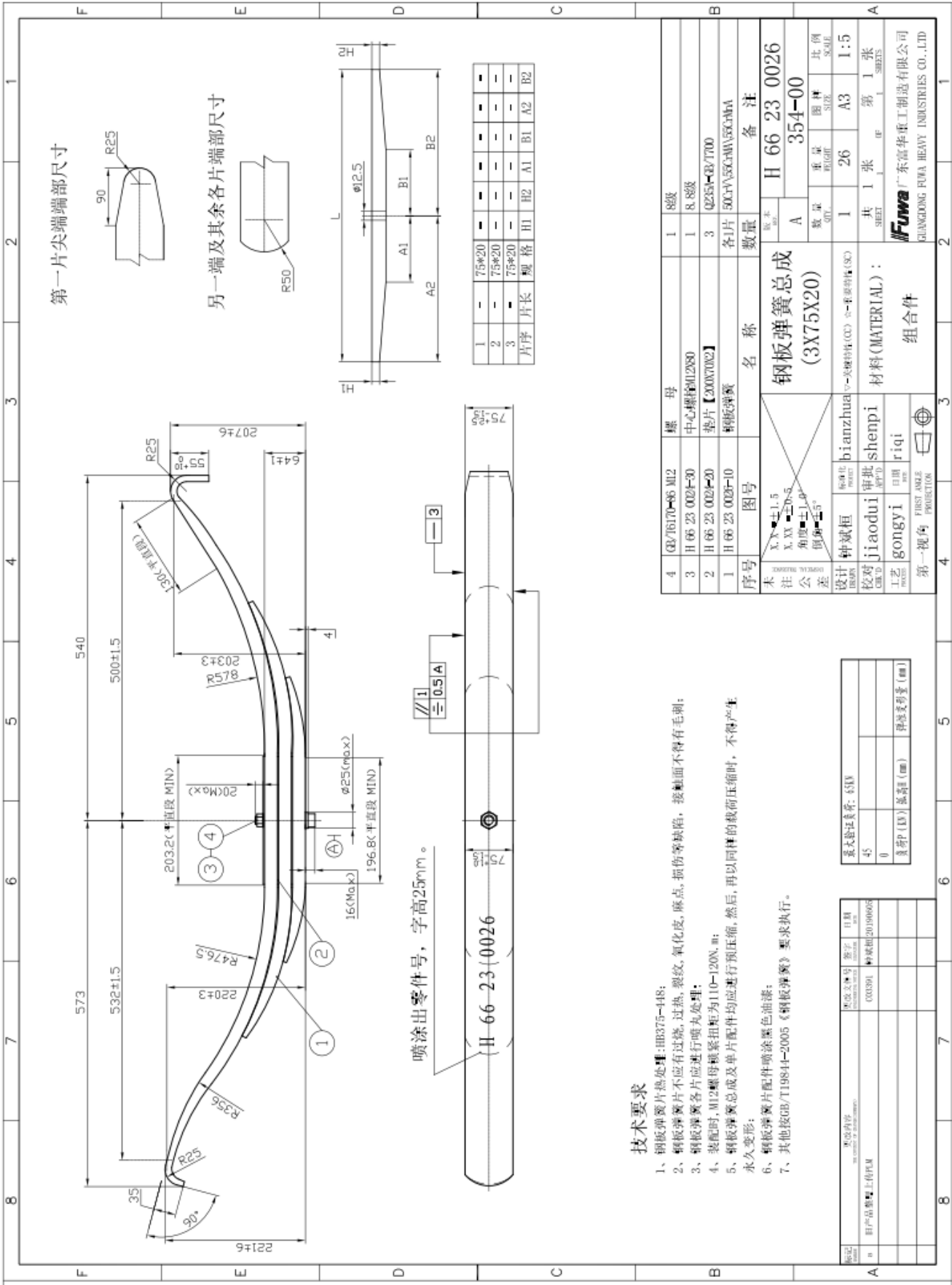
SUSPENSION

AXN #FH662I406U3A026-101



LEAF SPRING

FUWA #H66230026 (354-00)

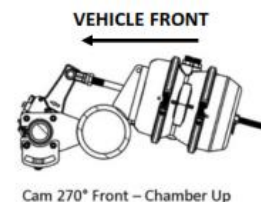


AXLES

AXN #TA225T67S7158733 (None ABS; None PSI)

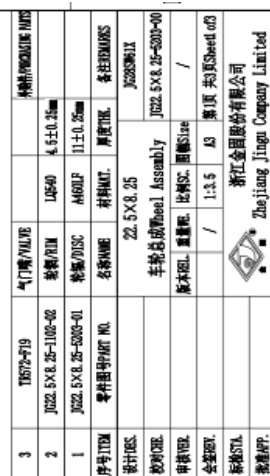
AXN #TA225T67S7158734 (ABS; None PSI)

5-YEAR WARRANTY WHEELEND



AXN Chassis Axle Spec Definition for Dorsey - 9/11/2020		
	AA Chassis Axle (ABS)	AA Chassis Axle (Non-ABS)
	TA 225 T 67 S 715 8734	TA 225 T 67 S 715 8733
Description	5" (127mm) OD Round, 12mm nominal wall thickness, N-series tapered spindle, stamped spider, with ABS block	5" (127mm) OD Round, 12mm nominal wall thickness, N-series tapered spindle, stamped spider, with ABS block
Nominal Beam Capacity	22,500 lbs GAWR	22,500 lbs GAWR
Brake Rating	R20	R20
Axle Track	71.5" (1816mm)	71.5" (1816mm)
Brake Description	Q Plus 16.5" x 7" 4707Q	Q Plus 16.5" x 7" 4707Q
Air Chamber Bracket	C-channel, one-piece bracket	C-channel, one-piece bracket
Camshaft	28-spline, 525mm nominal length, spline coated with anti-seize	28-spline, 525mm nominal length, spline coated with anti-seize
Automatic Slack Adjuster	Haldex, 5.5" P/N 409-20002 & Clevis Kit P/N 9999049	Haldex, 5.5" P/N 409-20002 & Clevis Kit P/N 9999049
Brake Drum	Included in H/D Assembly	Included in H/D Assembly
Hub & Drum Assy	AXN Hub & Drum Assy P/N H30-0647BFNTZ	AXN Hub & Drum Assy P/N H30-0647BFNTZ
ABS Prep	ABS blocks, tone rings and sensors	ABS blocks only
Wheel Bearing	Stemco HM212049-S and HM218248-S	Stemco HM212049-S and HM218248-S
Spindle Nut System	Stemco Zip-Torq P/N 400-4743	Stemco Zip-Torq P/N 400-4743
Wheel Seal	Stemco Guardian P/N 307-0743	Stemco Guardian P/N 307-0743
PSI Prep	Drill, Tap & Plug PSI Inlet Hole at Top Center Location.	Drill, Tap & Plug PSI Inlet Hole at Top Center Location.
Hub Cap/Venting	6 Hole, Stemco, P/N 358-4009	6 Hole, Stemco, P/N 358-4009
Axle Installation Orientation	270 Degrees Front Chambers UP	270 Degrees Front Chambers UP
Wheel-end Lubrication	Citgo SynDurance 460NL GI 00 Grease	Citgo SynDurance 460NL GI 00 Grease
Temperature Indicator	N/A	N/A
Color	Blue RAL5010	Blue RAL5010
Suspension Brackets Welded to Axle Beam	N/A	N/A
Spring Centers	N/A	N/A

JINGU #JG28SW61X

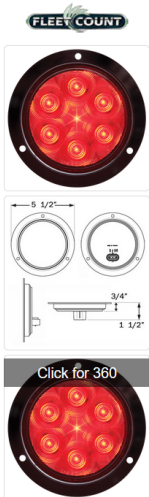


PHILLIPS #MT-225C



LED LIGHTS

STOP/TURN/TAIL LIGHTS OPTRONICS #STL13RFMB



STL13 FLANGE MOUNT SERIES

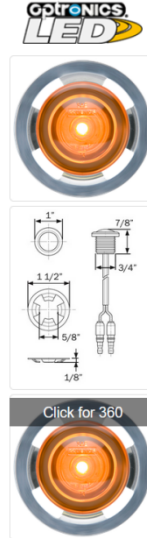
STL13RFMB

Red stop/turn/tail light, flange mount, weathertight connection

Polypack part no. STL13RFMBP

Color	Red
Diodes	7
Lumens	--
Mount	Flange - Recess
Connection	Weathertight, 3-pin
Pack Qty	10
FMVSS	S T I
Housing Material	Polycarbonate
Lens Material	Polycarbonate
Voltage	12V
Amp Draw	.234A Stop/Turn, .033A Tail
Warranty	Lifetime LED Warranty
Weight	0.275 lbs.
Size/Shape	4" Round
Dimensions (W x H x D)	5.500 x 5.500 x 1.938

MARKER/ABS LIGHTS - YELLOW OPTRONICS #MCL11SAKB



MCL11S SERIES

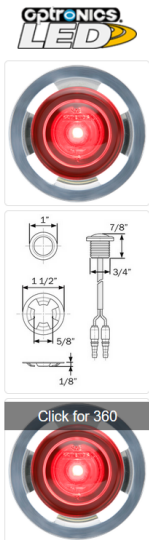
MCL11SAKB

Yellow light with gasket and locking ring, .180 bullets

Polypack part no. MCL11SAKBP

Color	Yellow
Diodes	1
Lumens	--
Mount	Recess
Connection	Hard wired, .180 male bullet(s)
Pack Qty	50
FMVSS	PC
Housing Material	Polycarbonate
Lens Material	Polycarbonate
Voltage	12V
Amp Draw	.082
Warranty	Lifetime LED Warranty
Weight	0.100 lbs.
Size/Shape	3/4" Round
Dimensions (W x H x D)	1.000 x 1.000 x 0.875

MARKER/CENTER ID LIGHTS - RED OPTRONICS #MCL11SRKB



MCL11S SERIES

MCL11SRKB

Red light with gasket and locking ring, .180 bullets

Polypack part no. MCL11SRKBP

Color	Red
Diodes	1
Lumens	--
Mount	Recess
Connection	Hard wired, .180 male bullet(s)
Pack Qty	50
FMVSS	PC
Housing Material	Polycarbonate
Lens Material	Polycarbonate
Voltage	12V
Amp Draw	.082
Warranty	Lifetime LED Warranty
Weight	0.100 lbs.
Size/Shape	3/4" Round
Dimensions (W x H x D)	1.000 x 1.000 x 0.875

LICENSE LIGHTS - WHITE OPTRONICS #LPL12CK2PG



LPL12 GROMMET MOUNT KITS

LPL12CK2PG

2-LED 3/4" license light with .180 male bullets on 10-in. leads, A12GLPB grommet

Polypack part no. LPL12CK2PGP

Color	White
Diodes	2
Lumens	--
Mount	Grommet
Connection	Hard wired, .180 male bullet(s)
Pack Qty	50
FMVSS	L
Housing Material	Polycarbonate
Lens Material	Polycarbonate
Voltage	12V
Amp Draw	0.03
Warranty	Lifetime LED Warranty
Weight	0.025 lbs.
Size/Shape	3/4" Round
Dimensions (W x H x D)	0.750 x 0.750 x 0.875

DECAL, LAYOUT

IN PROGRESS